

# B&C Oxford SSL /men - SM 002



## REGULAR FIT

- Cotton rich polycotton Oxford fabric with **Easy Care** finish
- Soft button-down collar
- Cross stitched mother-of-pearl effect buttons (except Oxford Blue: mother-of-pearl effect white buttons)
- Short sleeves with narrow cuffs
- The exclusive B&C Tie-Fix®
- Back yoke with 2 overstitched side pleats
- Left chest pocket
- Inside lap seams for perfect finishing
- Horizontal last buttonhole
- Mitre-shaped bottom hem side reinforcement
- Curved bottom hem



70% **combed** cotton - 30% polyester

Oxford

135 g/m<sup>2</sup> = **EASY CARE**

S > 6XL

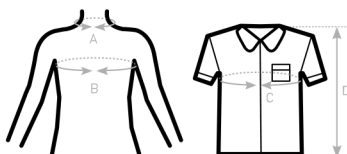
1 pc/pack & 10 pcs/carton



**DU♂  
CONCEPT**

with B&C Oxford SSL /women

## SIZES [CM]



B&C OXFORD SSL /M. SM 002	US	S	M	L	XL	2XL	3XL	4XL	5XL	6XL
A COLLAR TO FIT	CM INS	37/38 14,5/15	39/40 15,5	41/42 16,5	43/44 17,5	45/46 18	47/48 19	49/50 19,5	51 20	52 21
B CHEST TO FIT	CM INS	92/97 36/38	97/102 38/40	102/107 40/42	107/112 42/44	112/117 44/46	117/122 46/48	122/127 48/50	127/132 50/52	132/137 52/54
C CHEST SIZE	CM	111	116	126	136	141	151	156	161	171
D CENTER BACK LENGTH	CM	80	81	83	85	86	88	89	90	92



OEKO-TEX®  
CONFIDENCE IN TEXTILES  
STANDARD 100  
1501003 Certifies  
Tested for harmful substances.  
www.oeko-tex.com/standard100

MEN'S SHORT SLEEVED EASY CARE OXFORD SHIRT



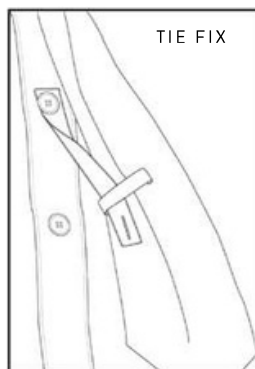
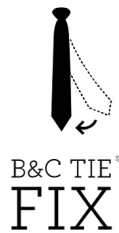
SOFT BUTTON-DOWN  
COLLAR

CROSS STITCHED  
MOTHER-OF-PEARL  
EFFECT BUTTONS

SHORT SLEEVES  
WITH NARROW  
CUFFS

LEFT CHEST POCKET

DOUBLE FOLDED SIDE  
AND SLEEVE SEAMS



BACK YOKE WITH  
2 SIDE PLEATS  
AND TRENDY  
TOPSTITCHINGS

CURVED BOTTOM  
HEM WITH SIDE  
REINFORCEMENT