



JW937

B&C Hooded Softshell /women

High performance Softshell Jacket - 3 layer



Composition

Outer layer: 94% polyester / 6% elastane (Woven softshell)
 Mid layer: Bonded breathable membrane
 Inner layer: 100% polyester anti-pilling micro-fleece
 Lining: 100% polyester mesh lining on front panels

Size

XS, S, M, L, XL, 2XL

Packing

1 pc/pack & 10 pcs/carton

Weight

340 g/m²

Details

SUPERIOR FABRIC AND ADVANCED TECHNOLOGY

Ignore the weather and enjoy the moment with the B&C Hooded Softshell /women jacket and its detachable balaclava hood. The B&C Hooded Softshell /women is truly designed for protection, warmth and comfort. It has a 3-layer construction including a thin, high quality membrane for maximum comfort, whatever the weather. This membrane is simultaneously waterproof, windproof and highly breathable. It is laminated to a water-repellent woven outer layer and a warm micro-fleece inner layer.

Stay dry, warm and comfortable even during extended use, even in harsh conditions. For a weatherproof duo, pair it with the B&C Hooded Softshell /men. The line also includes a kid's version.

PROTECTION

- Perfect weather protection thanks to the 3-layer Softshell construction.
- Detachable balaclava hood and chin protector provide an extra layer of protection and warmth when you need it.
- Cuffs with closing tabs complete the insulation.
- Adjustable hem with drawcord and stoppers combined with a longer back mean you stay insulated and protected even when active.
- The breathable inner membrane means the wearer stays dry at all times.
- Extra-warmth thanks to micro-fleece inside layer.

COMFORT & FIT

- Contemporary armour style completes an ultimate urban look.
- Raglan sleeves.
- Flat stitching for greater comfort.
- 4-way stretch fabric guarantees flexibility and total ease of movement.
- Perfect arm & elbow sleeve shape.



Colors



DUO
CONCEPT

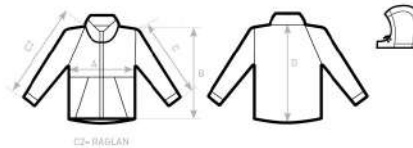
Want the same style for everyone?

Try the B&C Hooded Softshell /men

Care instructions



All our products are tested and approved using all main print techniques.



B&C HOODED SOFTSHELL /W. JW 937	XS	S	M	L	XL	XXL	XXXL
A HALF CHEST	44	46	48	50	52	54	-
B BODY LENGTH FROM NECK POINT	59	61	63	65	67	69	-
C2 SLEEVE LENGTH FROM NECK POINT (NOT STRAIGHT)	67,5	69,5	71,5	73,5	75,5	77,5	-
D CENTER BACK LENGTH	62	64	66	68	70	72	-

B&C USES ONLY RESPONSIBLY SOURCED FIBRES FOR ALL T-SHIRTS, POLO SHIRTS AND SWEATSHIRTS.