

JU824

B&C Ocean Shore

Middle Weight Jacket with Thermo Micro-fleece Lining



Colors



Composition

Outer layer: 100% nylon taffeta
 Body lining: 100% micro-fleece
 Sleeves lining: 100% padded polyester

Size

S, M, L, XL, 2XL, 3XL*

Packing

5 pcs/pack & 30 pcs/carton

Color Note

*Colours available in 3XL: Black, Navy, Red

Details

This middle-weight windproof jacket is thermo-insulated thanks to its real micro-fleece lining. A standing collar, adjustable cuffs and a concealed hood in the collar together with its water repellent 100% nylon taffeta offer complete protection.

The B&C Ocean Shore is a sailor inspired jacket that has been teste with both the wearer and decorator in mind to make sure it is a true advantage for your business.

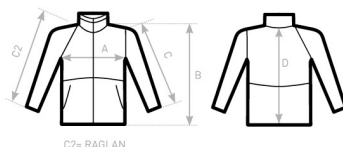
Middle Weight Jacket with Thermo Micro-fleece Lining

- Front covered full zip opening with closure and zip pull
- Adjustable hood concealed inside the collar with easy to pull tag
- 2 front pockets and 1 inner pocket wallet
- Open hem with elasticated cord
- 2 easy adjust stoppers
- Adjustable cuffs with closing tabs
- Easy access for decoration via a zip in the lining

Care instructions



All our products are tested and approved using all main print techniques.



B&C OCEAN SHORE JU 824	XS	S	M	L	XL	XXL	XXXL
A HALF CHEST	-	60	62,5	65	67,5	70	72,5
B BODY LENGTH FROM NECK POINT	-	74	76	78	80	82	84
C SLEEVE LENGTH	-	61,5	63	64,5	66	67,5	69
D CENTER BACK LENGTH	-	72	74	76	78	80	82

B&C USES ONLY RESPONSIBLY SOURCED FIBRES FOR ALL T-SHIRTS, POLO SHIRTS AND SWEATSHIRTS.