



ADJUSTED FIT

- Cotton rich polycotton Oxford fabric with **Easy Care** finish
- Soft feminine collar
- Cross stitched mother-of-pearl effect buttons (except Oxford Blue: mother-of-pearl effect white buttons)
- Short sleeves with narrow cuffs
- Darts at bustline & back panel for a feminine shape
- Horizontal last buttonhole
- Curved bottom hem



70% **combed** cotton - 30% polyester

Oxford

135 g/m² **EASY CARE**

XS > 6XL

1 pc/pack & 10 pcs/carton



DUO
CONCEPT

with B&C Oxford SSL /men

Shirt | women



SIZES [CM]

B&C OXFORD SSL /W. SW 004	US	XS	S	M	L	XL	2XL	3XL	4XL	5XL	6XL
A DRESS SIZE	FR	36	38	40	42	44	46	48	50	52	54
	IT	40	42	44	46	48	50	52	54	56	58
	EU	34	36	38	40	42	44	46	48	50	52
	UK	8	10	12	14	16	18	20	22	24	26
B CHEST SIZE	CM	91	96	101	106	111	116	121	126	131	136
C CENTER BACK LENGTH	CM	65	66	67	68	69	70	71	72	73	74

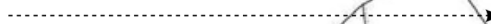


OEKO-TEX®
CONFIDENCE IN TEXTILES
STANDARD 100
1501003 Certified
Tested for harmful substances.
www.oeko-tex.com/standard100

WOMEN'S SHORT SLEEVED EASY CARE OXFORD SHIRT



SOFT FEMININE
COLLAR



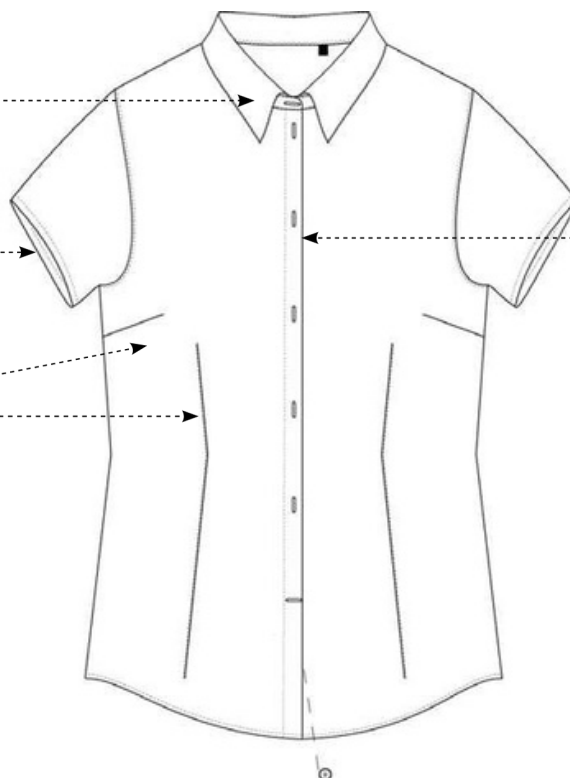
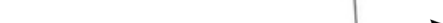
SHORT SLEEVES
WITH NARROW CUFFS



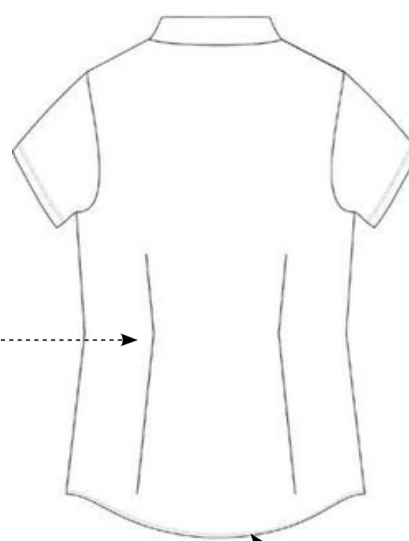
CROSS STITCHED MOTHER-
OF-PEARL EFFECT BUTTONS



DARTS AT
BUSTLINE AND
FRONT PANEL



DARTS
AT BACK PANEL



CURVED
BOTTOM HEM

