

JU880

B&C Bodywarmer Explorer

Multifunctional Bodywarmer

B&C
COLLECTION



Composition

Outer layer: 65% polyester - 35% cotton

Inner layer: 100% heavy padded polyester lining for extra warmth

Size

S, M, L, XL, 2XL, 3XL*

Packing

1 pc/pack & 10 pcs/carton

Color Note

*Colours available in 3XL: Black, Navy, Red

Details

The functional B&C Bodywarmer Explorer will keep your core warm while leaving your arms free to work or venture out. Made of heavy thermo-insulation polyester fibers padding completed with elasticated armholes and longer back gives you optimum warmth and comfort.

Its 9 multifunctional pockets makes it your active best friend.

You will find 2 warming hands pockets accessible from the side, 3 cargo pockets to store everything you need at hands, 2 pen pockets, 2 zipped pocket and 1 internal chest pocket.

All this makes our B&C Bodywarmer Explorer both practical and versatile.

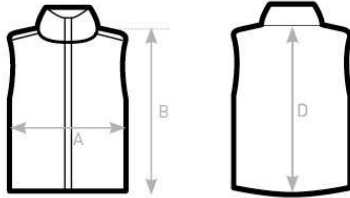
- Front covered full zip with press-stud fastenings
- 5 outer pockets (including 2 with zips)
- 1 inner wallet pocket
- 2 extra outer pencil pockets
- Adjustable wind-stoppers in the armholes with elasticated cord and stoppers
- Open hem
- Longer back

Care instructions



All our products are tested and approved using all main print techniques.



Colors**Size Guide**

B&C BODYWARMER EXPLORER JU 880	XS	S	M	L	XL	XXL	XXXL
A HALF CHEST	-	60,5	62,5	64,5	66,5	68,5	70,5
B BODY LENGTH FROM NECK POINT	-	66	68	70	72	74	76
D CENTER BACK LENGTH	-	71,5	73,5	75,5	77,5	79,5	81,5