



## ADJUSTED FIT

- Qualitative polycotton poplin with **Easy Care** finish
- Soft feminine collar
- Cross stitched mother-of-pearl effect buttons
- 2-button adjustable cuffs
  - a. Angular cuffs & thin square-shaped gauntlets
  - b. Additional cufflink buttonholes
- Darts at bustline & back panel for a feminine shape
- Horizontal last buttonhole
- Curved bottom hem



65% polyester - 35% **combed** cotton

Poplin

115 g/m<sup>2</sup> **EASY CARE**

XS > 4XL

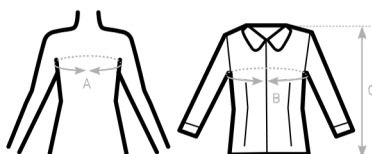
1 pc/pack & 10 pcs/carton



**DUO**  
**CONCEPT**

with B&C Smart LSL /men

Shirt | women



## SIZES [CM]

B&C SMART LSL /W. SW P63	US	XS	S	M	L	XL	2XL	3XL	4XL	5XL	6XL
A DRESS SIZE	FR	36	38	40	42	44	46	48	50	-	-
	IT	40	42	44	46	48	50	52	54	-	-
	EU	34	36	38	40	42	44	46	48	-	-
	UK	8	10	12	14	16	18	20	22	-	-
B CHEST SIZE	CM	91	96	101	106	111	116	121	126	-	-
C CENTER BACK LENGTH	CM	65	66	67	68	69	70	71	72	-	-



OEKO-TEX®  
CONFIDENCE IN TEXTILES  
STANDARD 100  
1501003 Certexbel  
Tested for harmful substances.  
www.oeko-tex.com/standard100

**DURABLE POLYCOTTON WOMEN'S LONG SLEEVED**

**EASY CARE POPLIN SHIRT**   
EASY CARE

