



REGULAR FIT

- 100% cotton twill with **Easy Care** finish
- Semi cut-away collar
- Cross stitched mother-of-pearl effect buttons
- 2-button adjustable cuffs
 - a. Angular cuffs & square-shaped gauntlets
 - b. Additional cufflink buttonholes
- The exclusive B&C Tie-Fix®
- Left chest pocket
- Back yoke with 2 overstitched side pleats
- Inside lap seams for perfect finish
- Horizontal last buttonhole
- Square-shaped bottom hem reinforcement
- Curved bottom hem

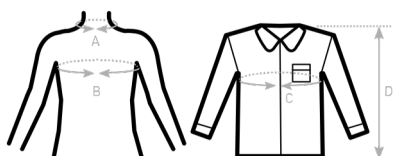


- 100% **combed** cotton
- Twill
- 130 g/m² **EASY CARE**
- S > 4XL
- 1 pc/pack & 10 pcs/carton
- 50, 5, 10, 10, P



DUO CONCEPT
with B&C Sharp LSL /women

SIZES [CM]



B&C SHARP LSL /M. SM T81	US	S	M	L	XL	2XL	3XL	4XL	5XL	6XL
A COLLAR TO FIT	CM	37/38	39/40	41/42	43/44	45/46	47/48	49/50	-	-
	INS	14,5 / 15	15,5	16 / 16,5	17 / 17,5	18	18,5 / 19	19,5	-	-
B CHEST TO FIT	CM	92/97	97/102	102/107	107/112	112/117	117/122	122/127	-	-
	INS	36/38	38/40	40/42	42/44	44/46	46/48	48/50	-	-
C CHEST SIZE	CM	112	117	127	137	142	152	157	-	-
D CENTER BACK LENGTH	CM	80	81	83	85	86	88	89	-	-

PURE COTTON MEN'S LONG SLEEVED

EASY CARE TWILL SHIRT

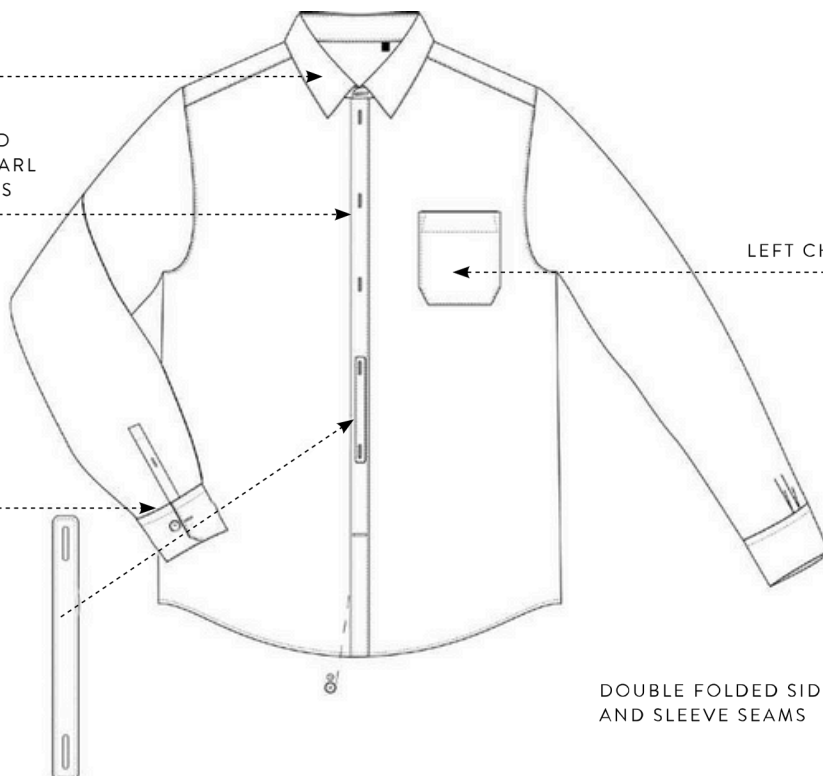


SEMI CUT-AWAY
COLLAR

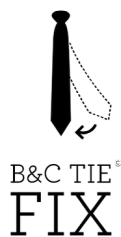
CROSS STITCHED
MOTHER-OF-PEARL
EFFECT BUTTONS

ANGULAR
2-BUTTON
ADJUSTABLE
CUFFS WITH
ADDITIONAL
CUFFLINK
BUTTONHOLES

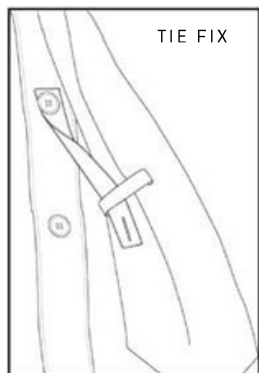
LEFT CHEST POCKET



DOUBLE FOLDED SIDE
AND SLEEVE SEAMS

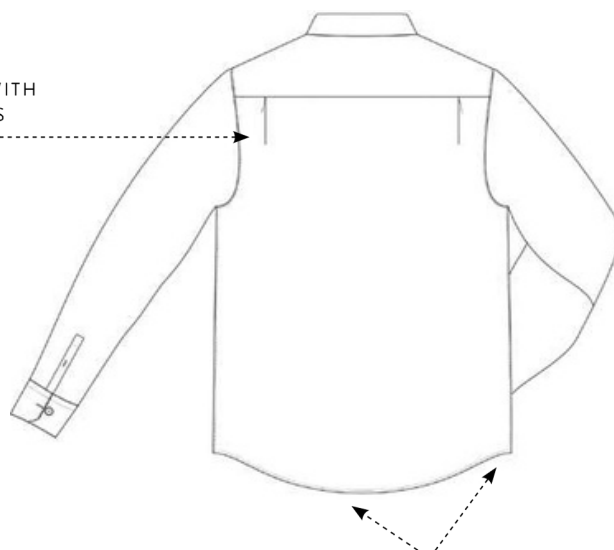


B&C TIE
FIX



TIE FIX

BACK YOKE WITH
2 SIDE PLEATS



CURVED BOTTOM HEM
WITH SQUARE-SHAPED
SIDE REINFORCEMENT