



ADJUSTED FIT

- Cotton rich polycotton Oxford fabric with **Easy Care** finish
- Soft feminine collar
- Cross stitched mother-of-pearl effect buttons (except Oxford Blue: mother-of-pearl effect white buttons)
- 2-button adjustable cuffs
 - a. Rounded cuffs
 - b. Additional cufflink buttonholes
- Darts at bustline & back panel for a feminine shape
- Horizontal last buttonhole
- Curved bottom hem



- 70% **combed** cotton - 30% polyester
- Oxford
- 135 g/m² = **EASY CARE**
- XS > 6XL
- 1 pc/pack & 10 pcs/carton
-



DUO[♂]
CONCEPT
with B&C Oxford LSL /men

Shirt | women



SIZES [CM]

B&C OXFORD LSL /W. SW 003	US	XS	S	M	L	XL	2XL	3XL	4XL	5XL	6XL
A DRESS SIZE	FR	36	38	40	42	44	46	48	50	52	54
	IT	40	42	44	46	48	50	52	54	56	58
	EU	34	36	38	40	42	44	46	48	50	52
	UK	8	10	12	14	16	18	20	22	24	26
B CHEST SIZE	CM	91	96	101	106	111	116	121	126	131	136
C CENTER BACK LENGTH	CM	65	66	67	68	69	70	71	72	73	74



OEKO-TEX®
CONFIDENCE IN TEXTILES
STANDARD 100
1501003 Certexbel
Tested for harmful substances.
www.oeko-tex.com/standard100

WOMEN'S LONG SLEEVED EASY CARE OXFORD SHIRT

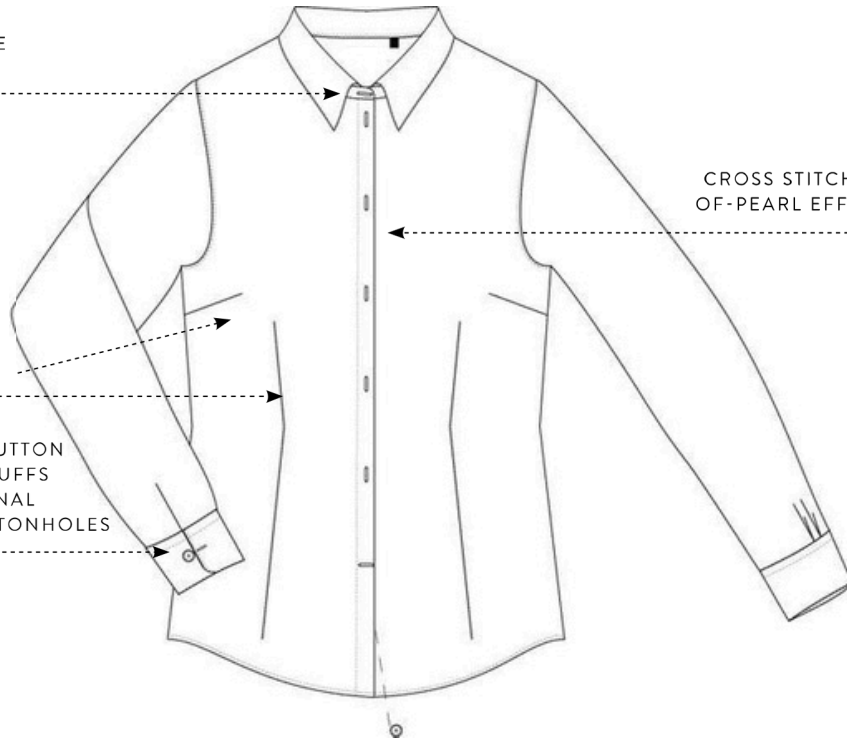


SOFT FEMININE
COLLAR

CROSS STITCHED MOTHER-
OF-PEARL EFFECT BUTTONS

DARTS AT
BUSTLINE AND
FRONT PANEL

ROUNDED 2-BUTTON
ADJUSTABLE CUFFS
WITH ADDITIONAL
CUFFLINK BUTTONHOLES



DARTS
AT BACK PANEL

CURVED
BOTTOM HEM

