



JUI62

B&C ID.701 Softshell

2-layer softshell jacket with comfortable ergonomic fit



Composition

Outer layer: 96% polyester - 4% elastane (woven 2-layer Softshell)
Inner layer: 100% polyester micro-fleece contrasting colour

Size

S, M, L, XL, 2XL, 3XL

Packing

5 pcs/pack & 30 pcs/carton

Weight

300 g/m²

Details

This ergonomically designed 2-layer softshell - the B&C ID.701 Softshell - is breathable, water-repellent and comfortable. It has a standing collar and a longer back to keep you warm and protected against cold, wind and rain. Its contrasted colour micro-fleece inner layer (except Black and White) creates a high value perception whilst not hindering identity application.

For the perfect basic softshell duo, pair it with the B&C ID.701 Softshell /women.

PROTECTION

- Water repellent, breathable 2-layer softshell with standing collar to protect against cold, wind and rain.
- Forward seams on shoulder for better comfort and water repellence
- Longer hem provides additional warmth

STYLE & FIT

- 2-way stretch fabric slim fit. Cut and sew panel ensures sleek ergonomic fit and freedom of movement
- Essential contemporary look supports broad range of uses
- The B&C ID.701 Softshell is lined in a contrast colour fleece, creating a high value perception whilst not hindering identity application
- Reinforced seams with double needle topstitching for extra durability and outdoor look
- Wide colour choice will support any idea and/or identity and create strong visibility when needed

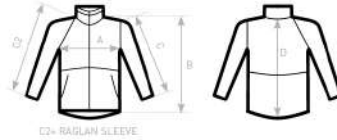


Care instructions



All our products are tested and approved using all main print techniques.

Colors



C2 - RAGLAN SLEEVE

| B&C ID.701 JUI62 | XS | S | M | L | XL | XXL | XXXL |
|-------------------------------|----|------|------|------|------|------|------|
| A HALF CHEST | - | 53 | 56 | 59 | 62 | 65 | 68 |
| B BODY LENGTH FROM NECK POINT | - | 68 | 69,5 | 71 | 72,5 | 74 | 75,5 |
| C SLEEVE LENGTH | - | 63,5 | 65 | 66,5 | 68 | 69,5 | 71 |
| D CENTER BACK LENGTH | - | 71 | 72,5 | 74 | 75,5 | 77 | 78,5 |



DUO
CONCEPT

Want the same style for everyone?

Try the B&C ID.701 Softshell /women

B&C USES ONLY RESPONSIBLY SOURCED FIBRES FOR ALL T-SHIRTS, POLO SHIRTS AND SWEATSHIRTS.