



WU03W

# B&C #Hoodie



## Composition

B&C, NOW sourcing 100% More Sustainable fibres for all cotton-based products

80% pre-shrunk ring-spun cotton (investing in Better Cotton\*) - 20% Recycled Polyester - RCS certified  
 \*By buying this product from B&C you're supporting responsible cotton production through Better Cotton.

## Size

XS, S, M, L, XL, 2XL, 3XL, 4XL\*, 5XL\*

## Packing

5 pcs/pack & 20 pcs/carton

## Weight

280 g/m<sup>2</sup>

## Color Note

HEATHER MID GREY, HEATHER NAVY, HEATHER ASPHALT, HEATHER RED, HEATHER DARK GREEN, HEATHER ROYAL BLUE & HEATHER PURPLE: 60% pre-shrunk ring-spun cotton - 40% Polyester  
 HEATHER GREY: 92% pre-shrunk ring-spun cotton - 8% VISCOSE

\*Colours available in 4XL-5XL: Black Pure, Navy Blue, Heather Grey, Asphalt, Royal, Red, White

## Details

B&C, NOW sourcing 100% More Sustainable fibres for all cotton-based products

Contemporary all purpose Hoodie available in 35 amazing colours made of 80/20 soft sweat fabric providing an ideal printing surface.

Your #bestallpurposehoodie #idealprintability

- Essential classic hooded sweatshirt, clean and minimalistic for any occasion **#allpurposes**
- Comfortable fit and body length for perfect look **#uptodate**
- Side seams ensure the best fit and a masculine silhouette **#bestshape**
- Identical colours (35) for men and women **#perfectduo**
- 9 sizes - XS to 5XL **#fitsall**
- Easy branding solution - B&C No Label Solution **#customiseme**
- Inside Single Jersey halfmoon in back to allow easy branding personalisation **#makemylifeeasy**
- Minimalist detailing suitable for many uses and end user requirements **#easystyling**



## Colors

- |                        |                              |                            |                    |
|------------------------|------------------------------|----------------------------|--------------------|
| 001 WHITE              | 005 BLACK PURE (URBAN BLACK) | 006 NAVY BLUE (URBAN NAVY) | 004 RED            |
| 453 ROYAL              | 881 WINE                     | 882 FOREST GREEN           | 669 ASPHALT        |
| 201 SOLAR YELLOW       | 233 PURE ORANGE              | 308 PINK FIZZ              | 331 CANDY PINK     |
| 443 HAWAIIAN BLUE      | 520 KELLY GREEN              | 351 RADIANT PURPLE         | 199 PALE YELLOW    |
| 305 PALE PINK          | 307 NUDE                     | 123 DESERT                 | 255 MELON ORANGE   |
| 339 LAVENDER           | 405 PURE SKY                 | 672 GREY FOG               | 503 LIGHT JADE     |
| 502 SAGE               | 551 MILLENNIAL KHAKI         | 665 ELEPHANT GREY          | 610 HEATHER GREY   |
| 623 HEATHER MID GREY   | 625 HEATHER ASPHALT          | 617 HEATHER RED            | 616 HEATHER PURPLE |
| 612 HEATHER ROYAL BLUE | 611 HEATHER NAVY             | 618 HEATHER DARK GREEN     |                    |

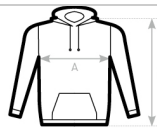
## Sustainability



## Care instructions



All our products are tested and approved using all main print techniques.



B&C #HOODIE WU03W	XS	S	M	L	XL	2XL	3XL	4XL	5XL
A HALF CHEST	50	53	56,5	60	63,5	67	71	75	79
B BODY LENGTH	69	71	73	75	77	79	80	81	82



DUO CONCEPT

Want the same style for everyone?

Try the B&C #Hoodie /women

**B&C USES ONLY RESPONSIBLY SOURCED FIBRES FOR ALL T-SHIRTS, POLO SHIRTS AND SWEATSHIRTS.**

View on the website

