



WW02Q

# B&C QUEEN Hooded

Royal PST



### Composition

B&C, NOW sourcing 100% More Sustainable fibres for all cotton-based products

80% pre-shrunk ring-spun cotton, combed (investing in Better Cotton\*)- 20% Recycled Polyester - RCS certified

\*By buying this product from B&C you're supporting responsible cotton production through Better Cotton.

### Size

XS, S, M, L, XL, 2XL, 3XL\*

### Packing

5 pcs/pack & 20 pcs/carton

### Weight

280 g/m<sup>2</sup>

### Color Note

HEATHER GREY: 75% pre-shrunk ring-spuncotton (investing in Better Cotton), combed - 21% Polyester- 4% VISCOSE

HEATHER MID GREY: 60% pre-shrunk ring-spuncotton (investing in Better Cotton), Combed - 40% Polyester

\*Colours available in 3XL: Black Pure, Navy Blue, Heather Grey, Asphalt, Royal, Red, White



### Details

B&C, NOW sourcing 100% More Sustainable fibres for all cotton-based products

The environment friendly luxurious Hooded for women thanks to exceptional softness, modern style and supreme printability offering 20 awesome colours and a wide range of sizes. The premium Hooded for women at its best.

- Elegant, luxurious, comfortable & Environment friendly Hooded sweatshirt
- Side seamed style ensures the best fit and a feminine silhouette
- Identical colours (20) for men and women for a perfect duo
- 7 sizes - XS to 3XL
- Single Jersey lined hood for extra durability and perfect appearance
- Flat laced drawstings with luxurious metal tips
- Qualitative long-lasting necktape
- Single Jersey halfmoon in the back for premium look and extra durability

### Colors



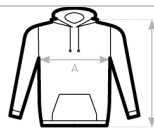
### Sustainability



### Care instructions



All our products are tested and approved using all main print techniques.



B&C QUEEN HOODED WW02Q	XS	S	M	L	XL	2XL	3XL	4XL
A HALF CHEST	45,5	48	51	54	57	60,5	64	-
B BODY LENGTH	62	64	66	68	69	70	71	-



DUO CONCEPT

Want the same style for everyone?  
**Try the B&C KING Hooded**

# B&C USES ONLY RESPONSIBLY SOURCED FIBRES FOR ALL T-SHIRTS, POLO SHIRTS AND SWEATSHIRTS.

View on the website

